

Academic Year 2021 (B.E. 2564)

# Graduate Student Handbook



FACULTY OF  
**ENGINEERING**  
**CHIANG MAI**  
UNIVERSITY

Foster Engineering Excellence

# Welcome Message

Warmest welcome all new graduate students of 2021 to the Faculty of Engineering, Chiang Mai University. We are pleased that you have chosen to study with us. As one of the top Engineering schools in Thailand, you will enrich yourself and engage in our intellectual community, through exciting new and practical research topics in a wide range of engineering specialties.

In this academic year, the disruption caused by COVID-19 remains among us. Students as well as the university, the faculty, and the programs need to adapt to this dynamic situation. Our staff have worked collectively and tirelessly to ensure smooth experience to all students. This first edition of graduate student handbook will serve as a reference in addition to official announcements.

Most of our processes in graduate studies have now switched to online. Teachings will be online in the first half of the new semester. We are hopeful that we will be able to continue face-to-face activities soon.

Over the coming years, the faculty aims to offer the knowledge, skills, and support to the students throughout their studies. In turn, we expect no less than exceptional research contribution and dedication from you. We hope that you will find everything that you need for your degree, and that everyone will find your own path to success in the future.

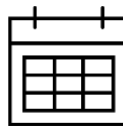
## About this handbook

Faculty of Engineering Graduate Student Handbook  
1<sup>st</sup> Edition, Academic year 2021 (B.E.2564)

Prepared by Assoc. Prof. Dr. Ukrit Mankong, Assistant Dean for Graduate Programs



# Academic Calendar



Students should consult the updated academic calendar at the following links. There may be new updates as the year progresses.

THAI VERSION: <https://www1.reg.cmu.ac.th/webreg/th/calendar/>

ENG VERSION: <https://www1.reg.cmu.ac.th/webreg/en/academic-calendar/>

## Rules and Regulations



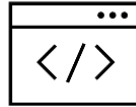
The following regulations apply to new student of 2021.

- [Chiang Mai University Regulation on Graduate Education 2559 B.E. \(For student code 59 onwards\)](#)/ข้อบังคับมหาวิทยาลัยเชียงใหม่ ว่าด้วยการศึกษาระดับบัณฑิตศึกษา พ.ศ. 2559 (THA+ENG)
- [Chiang Mai University Regulation on Graduate Education 2561 B.E. \(2<sup>nd</sup> issue\) \(For student code 59 onwards\)](#)/ข้อบังคับมหาวิทยาลัยเชียงใหม่ ว่าด้วยการศึกษาระดับบัณฑิตศึกษา (ฉบับที่ 2) พ.ศ. 2561 (THA+ENG)
- [Foreign Language Conditions for Graduate Students](#) (ENG+THA) This is New regulation for new students starting in academic year 2021.
- [Extension of study period](#) (THA)
- [Steps and Guidelines for Completion of Graduate Theses](#) (ENG+THA)
- [Steps and Guidelines in Doing Thesis \(Issue no. 2\)](#) (ENG+THA)
- [Steps and Guidelines in Doing Thesis \(Issue no. 3\)](#) (ENG+THA)
- Criteria and Operating Procedure for Thesis Publication (ENG+THA) [Issue1](#), [Issue 2](#), [Issue3](#)

### Special Announcement (English requirement during COVID-19 pandemic)

- [Operational Guidelines on Graduate Studies Management During COVID-19 Epidemic](#) (ENG+THA)

# Websites



The following are useful websites that you will need during your study.

**Faculty of Engineering:** <https://eng.cmu.ac.th/>

**Faculty of Engineering Education Services:** <https://reg.eng.cmu.ac.th/reg/>

**Graduate School (Regulations, Guidelines, Forms etc.):**

[https://www.grad.cmu.ac.th/grad\\_wp2/?page\\_id=74](https://www.grad.cmu.ac.th/grad_wp2/?page_id=74)

**University Registration Office:** <https://www.reg.cmu.ac.th>

**Graduate Student Course/Service Enrollment (THA):**

<https://www1.reg.cmu.ac.th/webreg/th/graduate/?T=U>

**Graduate Student Course/Service Enrollment (ENG):**

<https://www1.reg.cmu.ac.th/webreg/en/graduate-students/>

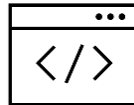
**University Library:** <http://www.library.cmu.ac.th>

**Language Institute:** <http://www.li.cmu.ac.th>

**Information Technology Service Center (Software, Email etc.):**

<http://itsc.cmu.ac.th>

# Department Websites



**Civil Engineering:** <http://civil.eng.cmu.ac.th/>

**Computer Engineering:** <https://www.cpe.eng.cmu.ac.th/>

**Electrical Engineering:** <http://ee.eng.cmu.ac.th/>

**Environmental Engineering:** <http://env.eng.cmu.ac.th/>

**Industrial Engineering:** <http://ie.eng.cmu.ac.th/>

**Mechanical Engineering:** <http://me.eng.cmu.ac.th/>

**Mining Engineering:** <http://mining.eng.cmu.ac.th/>

**Data Science:** <http://datascience.cmu.ac.th/>

# Personnel and Contacts



Graduate students **are encouraged to consult the administrative staff at their respective departments as the first point of contact.**

If necessary, the faculty staff below (at the Education Service Office) may further assist you.

## Academic and Program Services (งานบัณฑิตศึกษา):

Ms.Phinyaphat Yutabootr (พี่ลอร์ด) Tel.053 944179 ext.116

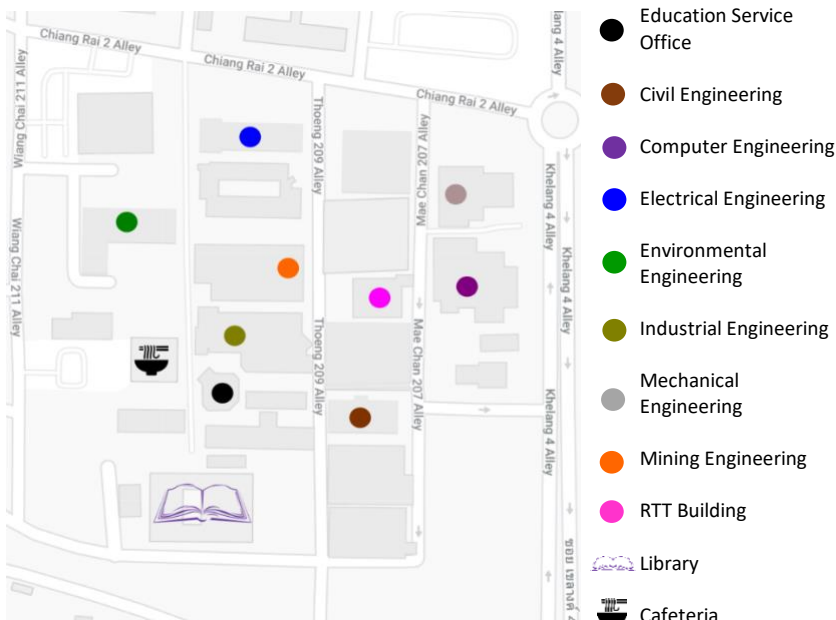
## Registration/Enrollment Services (ลงทะเบียน):

Mrs.Kanchana Napranboon (พี่นลิน) Tel. 053 944179 ext.118

## Exam Enquiry (การสอบ):

Ms.Nataree Tunja-Ai (พี่เอ๋) Tel. 053 944179 ext.105

# Map of Engineering Faculty





# Available programs and links

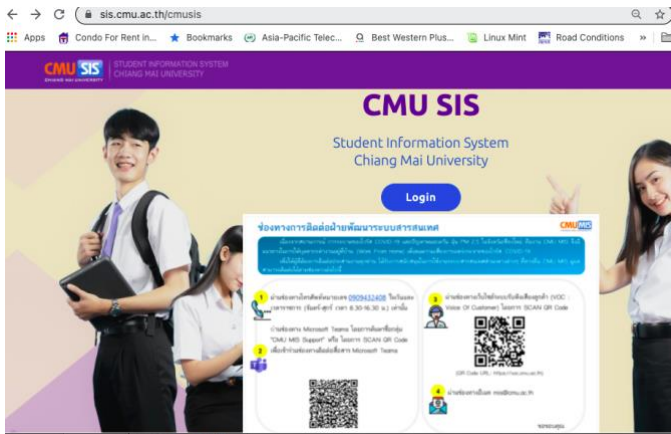
The following programs are effective for new students of Academic Year 2021 (B.E. 2564), whose student codes are 64XXXXXX.

Department	Programs	Current Edition (clickable link)
Civil Engineering	Master of Engineering Program in Civil Engineering	<a href="#">2018</a> (B.E. 2561)
	Master of Engineering Program in Construction Engineering and Management	<a href="#">2018</a> (B.E. 2561)
	Doctor of Philosophy Program in Civil Engineering	<a href="#">2018</a> (B.E. 2561)
Computer Engineering	Master of Engineering Program in Computer Engineering	<a href="#">2021</a> (B.E. 2564)
	Doctor of Philosophy Program in Computer Engineering	<a href="#">2021</a> (B.E. 2564)
Data Science (Program)	Master of Science Program in Data Science	<a href="#">2018</a> (B.E. 2561)
Electrical Engineering	Master of Engineering Program in Electrical Engineering	<a href="#">2021</a> (B.E. 2564)
	Doctor of Philosophy Program in Electrical Engineering	<a href="#">2021</a> (B.E. 2564)
Environmental Engineering	Master of Engineering Program in Environmental Engineering	<a href="#">2017</a> (B.E. 2560)
	Doctor of Engineering Program in Environmental Engineering	<a href="#">2017</a> (B.E. 2560)
Industrial Engineering	Master of Engineering Program in Industrial Engineering	<a href="#">2018</a> (B.E. 2561)
	Master of Engineering Program in Logistics Engineering and Supply Chain Management	<a href="#">2018</a> (B.E. 2561)
	Master of Science Program in Industrial Management	<a href="#">2021</a> (B.E. 2564)
	Doctor of Philosophy Program in Industrial Engineering	<a href="#">2017</a> (B.E. 2560)
Mechanical Engineering	Master of Engineering Program in Mechanical Engineering	<a href="#">2018</a> (B.E. 2561)
	Master of Engineering Program in Energy Engineering	<a href="#">2017</a> (B.E. 2560)
	Master of Engineering Program in Agricultural Engineering	<a href="#">2018</a> (B.E. 2561)
	Doctor of Philosophy Program in Mechanical Engineering	<a href="#">2018</a> (B.E. 2561)
	Doctor of Philosophy Program in Energy Engineering	<a href="#">2017</a> (B.E. 2560)
Mining Engineering	Master of Engineering Program in Mining and Georesources Engineering (International Program)	<a href="#">2019</a> (B.E. 2562)

# Information Systems

## Student Information System

All students please fill out information on the student information system  
<https://sis.cmu.ac.th/cmuisis>



## Thesis/IS system (Engineering)

[http://reg.eng.cmu.ac.th/thesis\\_is/](http://reg.eng.cmu.ac.th/thesis_is/)



กรุณาเลือกกรรมการ	Translation
<input type="button" value="ยื่นส่งผลสอบภาษาอังกฤษ"/>	<input type="button" value="Submit English Test result"/>
<input type="button" value="ยื่นเสนอหัวข้อโครงงาน THESIS/IS"/>	<input type="button" value="Submit Thesis/IS proposal"/>
<input type="button" value="ตรวจสอบสถานะ THESIS/IS"/>	<input type="button" value="Check Thesis/IS status"/>
<input type="button" value="Download แบบฟอร์มต่างๆ"/>	<input type="button" value="Forms download"/>
<input type="button" value="กรอกผลงานทางวิชาการเพื่อเสนอเข้ารับการพิจารณา"/>	<input type="button" value="Enter research publication details to apply for graduation"/>
<a href="#">คู่มือการใช้งาน</a>	

# Financial Support

## International Conference (Engineering)

Support for registration fee not exceeding THB 15000

Proceedings of the conference must be listed in SCOPUS database

Application should be made to the Research Administration, Academic Services and International Relations Section, of the faculty

## Support for ACADEMIC ACTIVITY (Graduate school)

The Graduate School is proud to support and promote CMU's Graduate Students. It provides scholarships to further their studies, publish their research, and to attend training courses and various other forms of academic activities. The budget for these scholarships comes from the Graduate School Income, interest from the Graduate School Fund as well as other sources.

More info at [https://www.grad.cmu.ac.th/grad\\_wp2/?page\\_id=131](https://www.grad.cmu.ac.th/grad_wp2/?page_id=131)

## TA/RA, CMU presidential scholarships

TA/RA and CMU presidential scholarships must be applied during admission application. The faculty closely monitors the progress of a scholarship student. **The dedicated contact point about scholarship is via Microsoft Team** (shown in the final page of this handbook).

## Financial Assistance During COVID-19 Pandemic (Semester 1/2021)

Financial assistance is available for Thai nationals. Additional information can be found at <https://cmu.ac.th/th/article/306b806f-da20-4daa-ad26-2b40a032a890>



# Teaching during COVID-19 pandemic

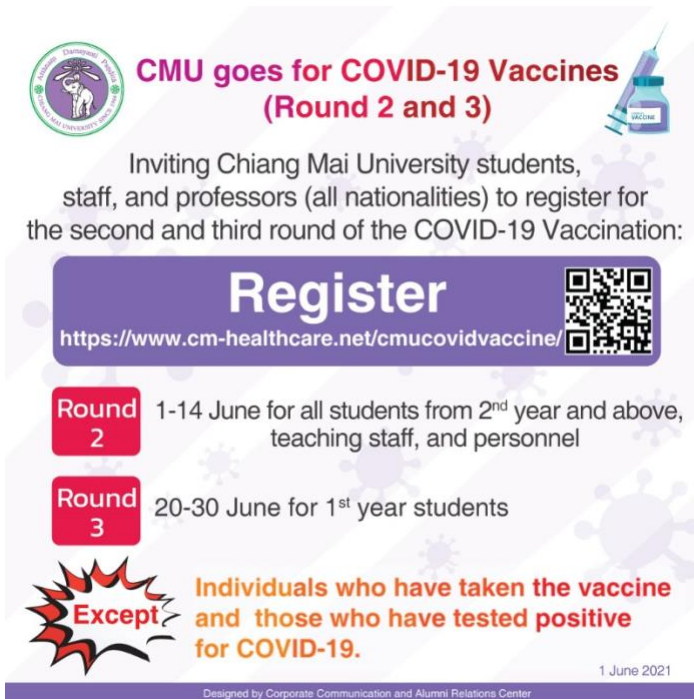
All classes are fully online during June 21<sup>st</sup> – July 31<sup>st</sup>, 2021.

After August 1<sup>st</sup>,

- If some students are unable to come to Chiang Mai, then the class will be online until the end of term
- Otherwise if all students in the class are in Chiang Mai, then the teaching method is decided by the instructor.

(reference) <https://www.cmu.ac.th/th/article/f22d4533-87db-4234-a635-51b924b7724f>

## COVID-19 Vaccine for Students



The poster features the Chiang Mai University logo on the left and a syringe icon on the right. The main title is 'CMU goes for COVID-19 Vaccines (Round 2 and 3)'. Below this, it invites students, staff, and professors to register for the second and third rounds of vaccination. A large purple 'Register' button contains the URL <https://www.cm-healthcare.net/cmucovidvaccine/> and a QR code. The registration schedule is listed in two red boxes: Round 2 (June 1-14) for 2nd year and above, and Round 3 (June 20-30) for 1st year students. A red starburst graphic highlights that individuals who have taken the vaccine or tested positive for COVID-19 are exempt. The date '1 June 2021' and the design credit 'Designed by Corporate Communication and Alumni Relations Center' are at the bottom.

**CMU goes for COVID-19 Vaccines (Round 2 and 3)**

Inviting Chiang Mai University students, staff, and professors (all nationalities) to register for the second and third round of the COVID-19 Vaccination:

**Register**  
<https://www.cm-healthcare.net/cmucovidvaccine/>

**Round 2** 1-14 June for all students from 2<sup>nd</sup> year and above, teaching staff, and personnel

**Round 3** 20-30 June for 1<sup>st</sup> year students

**Except** Individuals who have taken the vaccine and those who have tested positive for COVID-19.

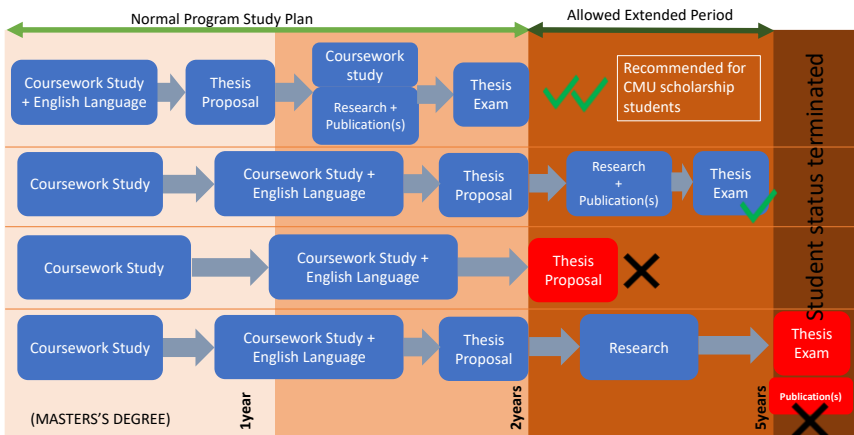
1 June 2021  
Designed by Corporate Communication and Alumni Relations Center

Updated announcements regarding COVID-19 situation at <https://www.cmu.ac.th/en/articlegroup/3c8ab7ce-8228-43bd-aa91-e48b436c81b7>

# General Study Plan (Master's degree)

General rules of thumb are.

1. A student must pass English language condition before Thesis proposal. (except type 3)
2. Thesis proposal must be approved within 2 years, otherwise the student status will be terminated.
3. Normal study plan is 2 years. (Student may complete their study within 5 years)



Currently most graduate programs in Faculty of Engineering are for full-time study. Students have limited time to complete their degrees.

It may be possible to extend your study period under exceptional circumstances. Please contact your own department of your condition.

Scholarship students (TA-RA) for Master's degree must complete thesis proposal in the 1<sup>st</sup> year to continue scholarship eligibility in the 2<sup>nd</sup> year.

All scholarships are only granted for maximum 2 years.

*The faculty works closely with the department to ensure that all students receive gratifying academic and social experiences during their time with us.*

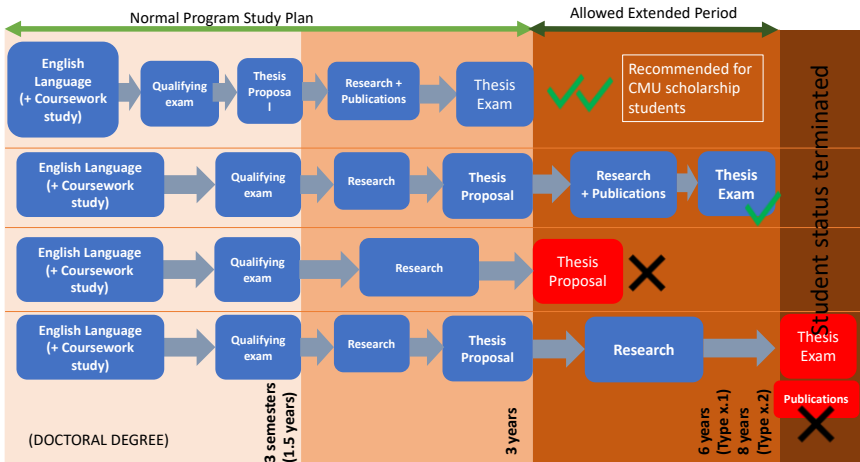
*Regular seminars and meetings are organized by the programs and the faculty. Some students are required to attend them as part of their curriculum.*

Scholarship students and students of some programs will be required to submit regular progress report to the graduate school (via the faculty), either every month or every semester.

# General Study Plan (Ph.D.)

General rules of thumb are.

1. A student must pass English language and Qualifying Exam before Thesis proposal.
2. Thesis proposal must be approved within 3 years, otherwise the student status will be terminated.
3. Normal study plan is 3 years (Type X.1) and 5 years (Type X.2). [A student may complete their study within 6 years (Type X.1) and 8 years (Type X.2)]



Currently most graduate programs in Faculty of Engineering are for full-time study. Students have limited time to complete their degrees.

It may be possible to extend your study period under exceptional circumstances. Please contact your own department of your condition.

Scholarship students (TA-RA) for Ph.D. must complete thesis proposal in the 3 semesters (1.5 years) to continue scholarship eligibility.

All scholarships are only granted for maximum 6 years (type X.1) and 8 years (type X.2).

*The faculty works closely with the department to ensure that all students receive gratifying academic and social experiences during their time with us.*

*Regular seminars and meetings are organized by the programs and the faculty. Some students are required to attend them as part of their curriculum.*

Scholarship students and students of some programs will be required to submit regular progress report to the graduate school (via the faculty), either every month or every semester.

# Course Enrollment

Course enrollment in regular semester must not exceed 15 credits.  
Course enrollment in summer semester must not exceed 6 credits.  
(To exceed the above number of credits, a student requires approval).

In the case that all the required credits have been earned, a student must enroll for University Service, in every semester until degree completion.

Enrollment & Fee payment must be completed within the dedicated period as specified in the academic calendar. (You must check always check the updated calendar).

## **Late enrollment and late fee payment will result in student status termination.**

If you have difficulty with enrollment or fee payment, you must contact the faculty BEFORE the deadline.

Website: <https://www.reg.cmu.ac.th>

New students in Thesis only programs (such as M.Eng. type 1, Ph.D. type 1.x) who already paid the fee for the first semester.

➔ Must also enroll for university services (schedule below)

## Important dates

### Semester 1/2021

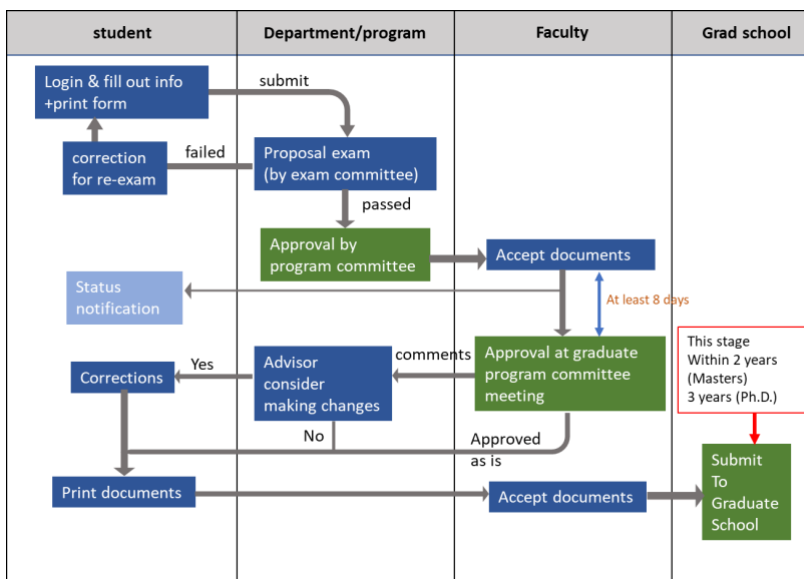
All students must do course enrollment or university service enrollment every semester.

(For semester 2/2021, please check the dates in academic calendar links, p.1)

Course adding/dropping, course enrollment	June 19 – 27, 2021
University services enrollment	June 21 – July 20, 2021
Course withdrawal without receiving grade "W"	June 19 - July 2, 2021
Course withdrawal receiving grade W	July 5 -September 10, 2021
Enrollment fee payment	July 5 -9, 2021
First day of semester/classes	June 21, 2021
Midterm Exam period	August16 -22, 2021
Final Exam period	October 11 – 12, 14 – 21 and 26 – 29, 2021

CREDITS are earned when a student receives A,B+,B,C+,C or S grades.  
The grades for all Required Courses in your program must be ≥C, otherwise such courses must be retaken.

# Thesis Proposal Procedure



A student must have passed English language condition before submitting their research proposal.

The meeting schedule for the Graduate Program Committee of Faculty of Engineering is on the first Wednesday of each month.

Login to submit proposal at [https://reg.eng.cmu.ac.th/thesis\\_is/](https://reg.eng.cmu.ac.th/thesis_is/)  
 (Additional information [https://www.grad.cmu.ac.th/grad\\_wp2/?page\\_id=1403](https://www.grad.cmu.ac.th/grad_wp2/?page_id=1403) )

## English language

Provisional Ph.D. student has 1 year to pass English language test (CMU-eTEGS  $\geq 45$ )

English test scores required for thesis proposal

Master's (CMU eTEGS  $\geq 60$ )

Ph.D. & Master's (Inter program) (CMU eTEGS  $\geq 65$ )

Students can use results of other standard tests such as TOEFL, IELTS, TOEIC (only some Master's programs), etc. Details found in the new Language condition (link on page 1)

Test result is valid for 2 years. Please submit your test results to [http://reg.eng.cmu.ac.th/thesis\\_is/](http://reg.eng.cmu.ac.th/thesis_is/) and also to your department.

# Research publication

Research publication is required for all graduate students as per the degree conditions. The number and types of publications for each program type are summarized in the following table. This table is according to the graduate school announcements. However, your own program may state them differently, students must recheck with their own program curriculum.

## Table of minimum publication requirements

Degree and Type	Inter Journal (In Database)	Inter Journal	TCI Tier 1 Journal	Inter Conference With proceedings	National Conference	CMU Grad School Journal or other method (accepted by the program)	Total
M.Eng. & M.Sc. Type 1			1		1		2
M.Eng. & M.Sc. Type 2			1*	1*			1
M.Eng. & M.Sc. Type 3						1	1
Ph.D. Type 1.1	1	1		1			3
Ph.D. Type 1.2	2			1			3
Ph.D. Type 2.1	1			1			2
Ph.D. Type 2.2	1	1		1			3

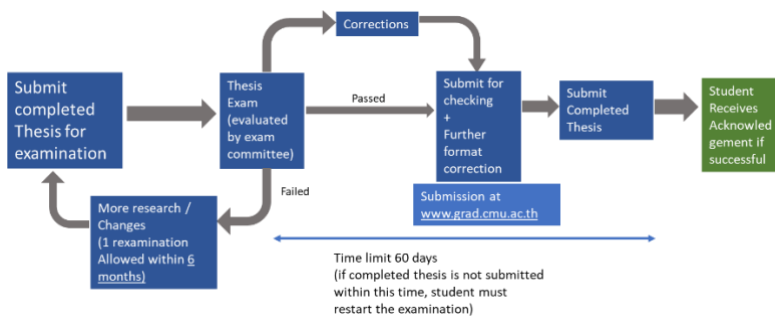
Notes: 1) \* either one is accepted

2) International Journal Databases include ISI, IEEE, Scopus, PubMed, Web of Science

3) At least one (main) publication must specify the student as the first author and the student's affiliation as "Graduate/PhD/Master's Degree Program in ..., Faculty/College/School of ..., Chiang Mai University".



# Thesis Exam Procedure



Thesis submitted for examination must be accompanied by a Turnitin plagiarism check report.

## Graduation

- A student may apply for graduation if they fulfill all program requirements
- General requirements include
  - Overall GPA  $\geq 3.00$  (and Field specialized courses GPA  $\geq 3.00$ )
  - Comprehensive examination passed (Master's type 3 and if specified by the program)
  - Thesis examination passed
  - Research publications

Determination and perseverance are key to your success.

Thesis advisor is there to help and guide you in your research. It is important to build and maintain good relationship with the advisor.

A student should make academic plan and discuss their research work with the advisor regularly.

# Maintaining your student status

Graduate student status remains valid except in one of the following cases

- Student fails to complete course enrollment or university service enrollment within the allowed period at the start of each semester (1 and 2). Summer semester (3) does not count.
- Accumulated GPA < 2.75, from 2<sup>nd</sup> semester onwards.
- Student has not earned any credits after 2<sup>nd</sup> semester. (Except in a Thesis only program)
- Student's thesis proposal has not been approved after 2 years (Master's) or 3 years (Ph.D.)
- Student has failed qualifying exam (Ph.D.), even after re-exam
- Student has failed comprehensive exam (Master's type 3), even after re-exam.
- Reach the end of study period and is unable to extend their study. (5 years for Master's, 6 or 8 years for Ph.D.)

# Contact

---

## EDUCATION SERVICE (FACULTY OF ENGINEERING)

งานบริการการศึกษาคณะวิศวกรรมศาสตร์

**Tel:** 053 944179

**Website:**

<https://reg.eng.cmu.ac.th/reg/>

**Facebook :** งานบริการการศึกษา คณะวิศวกรรมศาสตร์

มหาวิทยาลัยเชียงใหม่

## DEPUTY DEAN FOR ACADEMIC AFFAIRS

**Email:** [uttapol.s@cmu.ac.th](mailto:uttapol.s@cmu.ac.th)

## ASSISTANT DEAN FOR GRADUATE PROGRAMS

**Email:** [ukrit.m@cmu.ac.th](mailto:ukrit.m@cmu.ac.th)

---

## GROUP CONTACT FOR

TA/RA scholarship students  
(2021)

Join MS Team group and  
enter code



**Join code: wboc713**

---

## GROUP CONTACT FOR

All new graduate students in  
2021

Join MS Team group and  
enter code



**Join code: e2hxx5g**

---

## GROUP CONTACT FOR

CMU Presidential scholarship  
students (2021)



**Join code: v3s6zxs**

---



งานบริการการศึกษา คณะวิศวกรรมศาสตร์ มหาวิทยาลัยเชียงใหม่

Office of Education Services, Faculty of Engineering, Chiang Mai University

239 Huaykaew Road, Suthep, Muang, Chiang Mai, 50200

Phone 053 944179

Web site address: <https://reg.eng.cmu.ac.th/reg/>