

Academic Year 2022
(B.E. 2565)

Graduate Student Handbook



ENGINEERING

CHIANG MAI UNIVERSITY

Foster Engineering Excellence

Welcome Message

Warmest welcome all new graduate students of 2022 to the Faculty of Engineering, Chiang Mai University. We are pleased that you have chosen to study with us. After a couple of years of mostly online teaching, it is a great pleasure to inform you that we are resuming face-to-face activities in this academic year, where many classes will gradually offer onsite teaching.

Students will once again be able to receive both academic and social experiences that we have to offer. With regards to the faculty of engineering academic services, we still offer both online and on-site services. Those who wish to contact and consult the faculty about any processes in your study can also do it by online means.

This student handbook is the 2nd edition and is specifically intended for graduate freshies. Some of the information has been updated from the previous edition due to new regulations. This handbook should be used as a reference in addition to official announcements and regulations.

We hope that you will find everything that you need for your degree here at the Faculty of Engineering, Chiang Mai University, and that everyone will find your own path to success in the future.

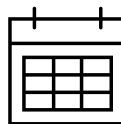
About this handbook

Faculty of Engineering Graduate Student Handbook
2st Edition, Academic year 2022 (B.E.2565)

Prepared by Assoc. Prof. Dr. Ukrit Mankong, Assistant Dean for Graduate Programs



Academic Calendar



Students should consult the updated academic calendar at the following links. There may be new updates as the year progresses.

THAI VERSION: <https://www1.reg.cmu.ac.th/webreg/th/calendar/>

ENG VERSION: <https://www1.reg.cmu.ac.th/webreg/en/academic-calendar/>

Rules and Regulations



The following regulations apply to new student of 2022. (clickable links)

- [Chiang Mai University Regulation on Graduate Education 2559 B.E. \(For student code 59 onwards\)](#)/ข้อบังคับมหาวิทยาลัยเชียงใหม่ ว่าด้วยการศึกษาในระดับบัณฑิตศึกษา พ.ศ. 2559 (THA+ENG)
- [Chiang Mai University Regulation on Graduate Education 2561 B.E. \(2nd issue\) \(For student code 59 onwards\)](#)/ข้อบังคับมหาวิทยาลัยเชียงใหม่ ว่าด้วยการศึกษาในระดับบัณฑิตศึกษา (ฉบับที่ 2) พ.ศ. 2561 (THA+ENG)
- [Foreign Language Conditions for Graduate Students](#) (ENG+THA) This is new regulation for new students starting in academic year 2021 (and applies to 2022).
- [Steps and Guidelines in Doing Thesis \(2021\)](#) (THA): This is the new guidelines for all current students.
- [Criteria and Operating Procedure for Thesis Publication](#) (ENG+THA): The new criteria for thesis publication apply to all students
- [Measures on Prevention of Corruption in Education and Intellectual Property Infringement in the Thesis 2021](#) (ENG+THA)

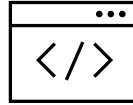
Special Announcement (English requirement during COVID-19 pandemic)

- [Operational Guidelines on Graduate Studies Management During COVID-19 Epidemic](#) (ENG+THA)

Thesis formats

- According to the “Steps and Guidelines in Doing Thesis (2021)”. Students can use two formats for thesis (REF: https://www.grad.cmu.ac.th/grad_wp2/?page_id=1403)
 - Front matter: [Thai](#), [English](#)
 - Chapters template: [Format 1](#), [Format 2](#)

Websites



The following are useful websites that you will need during your study.

Faculty of Engineering: <https://eng.cmu.ac.th/>

Faculty of Engineering Education Services: <https://reg.eng.cmu.ac.th/reg/>

Graduate School (Regulations, Guidelines, Forms etc.):

https://www.grad.cmu.ac.th/grad_wp2/?page_id=74

University Registration Office: <https://www.reg.cmu.ac.th>

Graduate Student Course/Service Enrollment (THA):

<https://www1.reg.cmu.ac.th/webreg/th/graduate/?T=U>

Graduate Student Course/Service Enrollment (ENG):

<https://www1.reg.cmu.ac.th/webreg/en/graduate-students/>

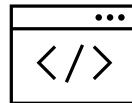
University Library: <http://www.library.cmu.ac.th>

Language Institute: <http://www.li.cmu.ac.th>

Information Technology Service Center (Software, Email etc.):

<http://itsc.cmu.ac.th>

Department Websites



Civil Engineering: <http://civil.eng.cmu.ac.th/>

Computer Engineering: <https://www.cpe.eng.cmu.ac.th/>

Electrical Engineering: <http://ee.eng.cmu.ac.th/>

Environmental Engineering: <http://env.eng.cmu.ac.th/>

Industrial Engineering: <http://ie.eng.cmu.ac.th/>

Mechanical Engineering: <http://me.eng.cmu.ac.th/>

Mining Engineering: <http://mining.eng.cmu.ac.th/>

Data Science: <http://datascience.cmu.ac.th/>

Personnel and Contacts



Graduate students **are encouraged to consult the administrative staff at their respective departments as the first point of contact.**

If necessary, the faculty staff below (at the Education Service Office) may further assist you.

Academic and Program Services (งานบัณฑิตศึกษา):

Ms.Phinyaphat Yutabootr (พี่ลอร์ด) Tel.053 944179 ext.116

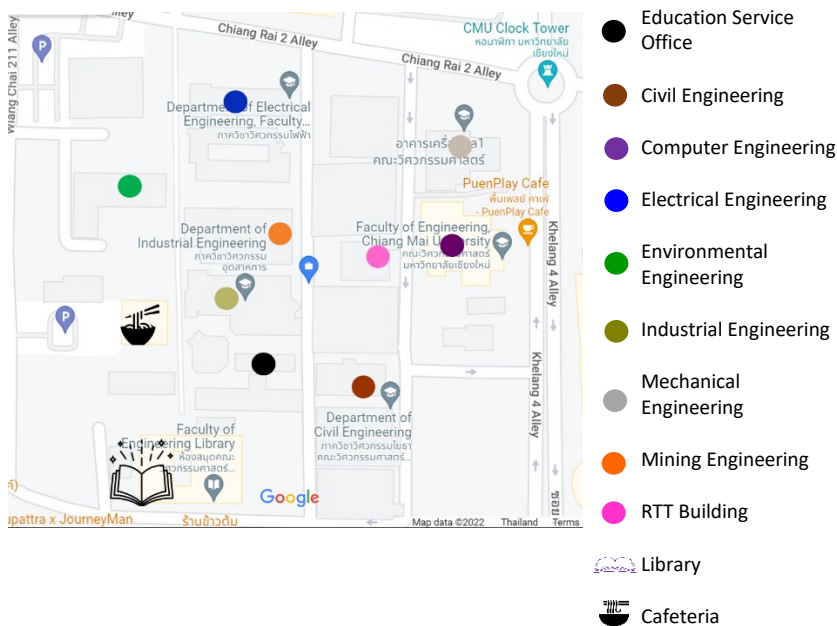
Registration/Enrollment Services (ลงทะเบียน):

Mrs.Kanchana Napranboon (พี่นิล) Tel. 053 944179 ext.118

Exam Enquiry (การสอบ):

Ms.Nataree Tunja-Ai (พี่เอ๋) Tel. 053 944179 ext.105

Map of Engineering Faculty



Available programs and links

The following programs are effective for new students of Academic Year 2022 (B.E. 2565), whose student codes are 65XXXXXX.

Department	Programs	Current Edition (clickable link)
Civil Engineering	Master of Engineering Program in Civil Engineering	2018 (B.E. 2561)
	Master of Engineering Program in Construction Engineering and Management	2018 (B.E. 2561)
	Doctor of Philosophy Program in Civil Engineering	2018 (B.E. 2561)
Computer Engineering	Master of Engineering Program in Computer Engineering	2021 (B.E. 2564)
	Doctor of Philosophy Program in Computer Engineering	2021 (B.E. 2564)
Data Science (Program)	Master of Science Program in Data Science	2018 (B.E. 2561)
	Doctor of Philosophy Program in Data Science	2021 (B.E. 2564)
Electrical Engineering	Master of Engineering Program in Electrical Engineering	2021 (B.E. 2564)
	Doctor of Philosophy Program in Electrical Engineering	2021 (B.E. 2564)
Environmental Engineering	Master of Engineering Program in Environmental Engineering	2022 (B.E. 2565)
	Doctor of Engineering Program in Environmental Engineering	2022 (B.E. 2565)
Industrial Engineering	Master of Engineering Program in Industrial Engineering	2018 (B.E. 2561)
	Master of Engineering Program in Logistics Engineering and Supply Chain Management	2018 (B.E. 2561)
	Master of Science Program in Industrial Management	2021 (B.E. 2564)
	Doctor of Philosophy Program in Industrial Engineering	2022 (B.E. 2565)
Mechanical Engineering	Master of Engineering Program in Mechanical Engineering	2018 (B.E. 2561)
	Master of Engineering Program in Energy Engineering	2022 (B.E. 2565)
	Master of Engineering Program in Agricultural Engineering	2018 (B.E. 2561)
	Doctor of Philosophy Program in Mechanical Engineering	2018 (B.E. 2561)
	Doctor of Philosophy Program in Energy Engineering	2022 (B.E. 2565)
Mining Engineering	Master of Engineering Program in Mining and Georesources Engineering (International Program)	2019 (B.E. 2562)

Information Systems

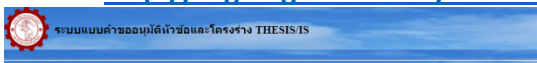
Student Information System

All students please fill out information on the student information system
<https://sis.cmu.ac.th/cmuis>



Thesis/IS system (Engineering)

http://reg.eng.cmu.ac.th/thesis_is/



กรุณาเลือกรายการ	Translation
<input type="text" value="ยื่นส่งผลสอบภาษาอังกฤษ"/>	<input type="button" value="Submit English Test result"/>
<input type="text" value="ยื่นเสนอหัวข้อโครงร่าง THESIS/IS"/>	<input type="button" value="Submit Thesis/IS proposal"/>
<input type="text" value="ตรวจสอบสถานะ THESIS/IS"/>	<input type="button" value="Check Thesis/IS status"/>
<input type="text" value="Download แบบฟอร์มต่างๆ"/>	<input type="button" value="Forms download"/>
<input type="text" value="กรอกผลงานทางวิชาการเพื่อเสนอคำใบ้การศึกษา"/>	<input type="button" value="Enter research publication details to apply for graduation"/>
คู่มือการใช้งาน	

Education service website (Engineering)

<http://reg.eng.cmu.ac.th>

The screenshot shows the homepage of the Education service website (Engineering) at <http://reg.eng.cmu.ac.th>. The page features a navigation bar with links to Home, Engineering Faculty, Engineering Education, and Home Page. The main content area includes a section for "กำหนดการนักศึกษา ป.ลรี" (Student Handbook) and "กำหนดการนักศึกษา" (Student Handbook) with a list of 7 items: 1. คู่มือการศึกษา (ระดับบัณฑิตศึกษา) (Student Handbook (Graduate Level)), 2. แบบฟอร์ม / คำร้อง (ระดับบัณฑิตศึกษา) (Forms / Requests (Graduate Level)), 3. แบบคำขออนุมัติหัวข้อและโครงร่าง THESIS/IS (Thesis/IS Approval Form), 4. ระบบอีพโหลดผลงานภาษาต่างประเทศ (Foreign Language Upload System), 5. งานวิจัย / วิทยานิพนธ์ (Research / Thesis), 6. ระบบกรอกผลงานทางวิชาการของนักศึกษาบัณฑิตศึกษา (Graduate Academic Work Submission System), and 7. บริการตรวจสอบหนี้สินออนไลน์ (Online Debt Check Service). Below this, there is a section for "ข่าวประกาศ" (News/Announcements) with a list of 3 items: 1. ข่าวดังต่าง ๆ สำหรับนักศึกษา (Various news for students), 2. ปฏิทินการศึกษา การลงทะเบียน เพิ่ม-ถอนกระบวนวิชา (Academic Calendar, Registration, Add/Drop Courses), and 3. ปฏิทินการศึกษาประจำปีการศึกษา 2565 ฉบับเต็ม (Full 2565 Academic Calendar). At the bottom, there are two sections: "ประกาศการสอบ" (Exam Announcement) with a list of 3 items: 1. Grad student handbook, 2. Forms download, and 3. Thesis/IS proposal; and "หลักเกณฑ์การย้ายสาขา,คณะ" (Criteria for Changing Major/Department) with a list of 4 items: 4. English language result submission, 5. Research and thesis information, 6. Enter research publication details to apply for graduation, and 7. Online debt check.

หน่วยทะเบียนและประมวลผล

หน้าแรก นักศึกษามหาวิทยาลัย ศึกษานิเทศศาสตร์ สำหรับเจ้าหน้าที่ เริ่มบอร์ด

กำหนดการนักศึกษา ป.ลรี

คู่มือการศึกษา (ระดับบัณฑิตศึกษา)

แบบฟอร์ม / คำร้อง (ระดับบัณฑิตศึกษา)

แบบคำขออนุมัติหัวข้อและโครงร่าง THESIS/IS

ระบบอีพโหลดผลงานภาษาต่างประเทศ

งานวิจัย / วิทยานิพนธ์

ระบบกรอกผลงานทางวิชาการของนักศึกษาบัณฑิตศึกษา

บริการตรวจสอบหนี้สินออนไลน์ - เริ่มบอร์ด

ข่าวประกาศ

ข่าวสารต่าง ๆ สำหรับนักศึกษา

ปฏิทินการศึกษา การลงทะเบียน เพิ่ม-ถอนกระบวนวิชา

ปฏิทินการศึกษาประจำปีการศึกษา 2565 ฉบับเต็ม

ภาคการศึกษาที่ 1 ภาคการศึกษาที่ 2 ภาคการศึกษาที่ 3

ประกาศการสอบ

ข้อมูลข่าวสารเกี่ยวกับการจัดสอบ

หลักเกณฑ์การย้ายสาขา,คณะ

ข้อมูลข่าวสาร / เอกสาร / หลักเกณฑ์

1. Grad student handbook
2. Forms download
3. Thesis/IS proposal
4. English language result submission
5. Research and thesis information
6. Enter research publication details to apply for graduation
7. Online debt check

Financial Support

International Conference (Engineering)

Support for registration fee not exceeding THB 15000

Proceedings of the conference must be listed in SCOPUS database

Application should be made to the Research Administration, Academic Services and International Relations Section, of the faculty

Support for ACADEMIC ACTIVITY (Graduate school) and other scholarships

The Graduate School provides scholarships to further their studies, publish their research, and to attend training courses and various other forms of academic activities. The budget for these scholarships comes from the Graduate School Income, interest from the Graduate School Fund as well as other sources.

More info at https://www.grad.cmu.ac.th/grad_wp2/?page_id=131

TA/RA, CMU presidential scholarships

TA/RA and CMU presidential scholarships must be applied during admission application. The faculty closely monitors the progress of a scholarship student.

COVID19 Financial support for Thai nationals

<https://cmu.ac.th/th/article/00bc820f-0c74-4fdd-a952-42e206e47e7f> (application deadline 20 June 2022)

Teaching formats in 2022



ประกาศมหาวิทยาลัยเชียงใหม่
เรื่อง แนวทางการจัดการเรียนการสอนและการสอบ ภาคการศึกษาที่ ๑ ปีการศึกษา ๒๕๖๕
ในสถานการณ์การแพร่ระบาดของโรคติดเชื้อไวรัสโคโรนา ๒๐๑๙ (COVID-19)

เนื่องจากขณะนี้สถานการณ์การแพร่ระบาดของโรคติดเชื้อไวรัสโคโรนา ๒๐๑๙ (COVID-19) มีแนวโน้มดีขึ้นตามลำดับ ดังนั้น เพื่อให้การจัดการเรียนการสอนและการสอบ ในภาคการศึกษาที่ ๑ ปีการศึกษา ๒๕๖๕ เป็นไปด้วยความเรียบร้อย อาศัยอำนาจตามความในมาตรา ๓๕ และมาตรา ๓๘ แห่งพระราชบัญญัติมหาวิทยาลัยเชียงใหม่ พ.ศ. ๒๕๕๑ และมติที่ประชุมคณะกรรมการบริหารมหาวิทยาลัย (กบม.) ในคราวประชุมครั้งที่ ๙/๒๕๖๕ เมื่อวันที่ ๑๘ พฤษภาคม ๒๕๖๕ จึงเห็นสมควรออกประกาศ เรื่อง แนวทางการจัดการเรียนการสอนและการสอบ ภาคการศึกษาที่ ๑ ปีการศึกษา ๒๕๖๕ ในสถานการณ์การแพร่ระบาดของโรคติดเชื้อไวรัสโคโรนา ๒๐๑๙ (COVID-19) ดังนี้

๑. ให้ส่วนงานจัดการเรียนการสอนและการสอบในรูปแบบออนไลน์ (On-site) เป็นหลัก โดยให้ปฏิบัติตามมาตรการและแนวทางป้องกันการแพร่ระบาดของโรคติดเชื้อไวรัสโคโรนา ๒๐๑๙ (COVID-19) อย่างเหมาะสมและสอดคล้องกับสถานการณ์
๒. ส่วนงานอาจพิจารณาจัดการเรียนการสอนและการสอบในรูปแบบไฮบริด (Hybrid) โดยจัดให้มีทั้งรูปแบบออนไลน์ (On-site) และออนไลน์ (Online) ควบคู่กันไป หรือจัดในรูปแบบออนไลน์ (Online) ๑๐๐% ได้ตามความเหมาะสมและความพร้อมของกระบวนการ โดยให้อยู่ในดุลยพินิจของหัวหน้าส่วนงาน และต้องแจ้งให้นักศึกษาทราบล่วงหน้าด้วย

จึงประกาศให้ทราบและถือปฏิบัติโดยทั่วกัน

ประกาศ ณ วันที่ ๑๘ พฤษภาคม พ.ศ. ๒๕๖๕

(ศาสตราจารย์คลินิก นายแพทย์นิเวศน์ นันทจิต)
อธิการบดีมหาวิทยาลัยเชียงใหม่

In semester 1/2565 (starting from 20 June 2022), teachings will be held mainly on-site. Exceptions will be applied for large class, or depending on the situation as appropriate.

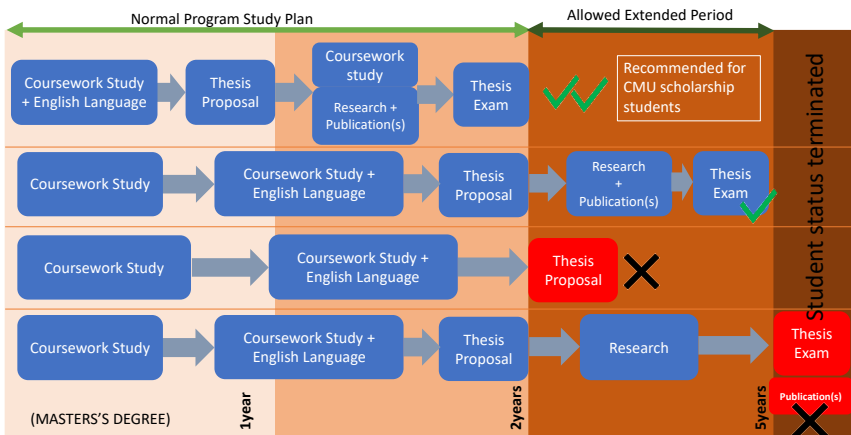
Announcements related to COVID19 situations

CMU COVID19 news <https://cmu.ac.th/th/covid-19/>

General Study Plan (Master's degree)

General rules of thumb are.

1. A student must pass English language condition before Thesis proposal. (except type 3)
2. Thesis proposal must be approved within 2 years, otherwise the student status will be terminated.
3. Normal study plan is 2 years. (Student may complete their study within 5 years)



Currently most graduate programs in Faculty of Engineering are for full-time study. Students have limited time to complete their degrees.

It may be possible to extend your study period under exceptional circumstances. Please contact your own department of your condition.

Scholarship students (TA-RA) for Master's degree must complete thesis proposal in the 1st year to continue scholarship eligibility in the 2nd year.

All scholarships are only granted for maximum 2 years.

The faculty works closely with the department to ensure that all students receive gratifying academic and social experiences during their time with us.

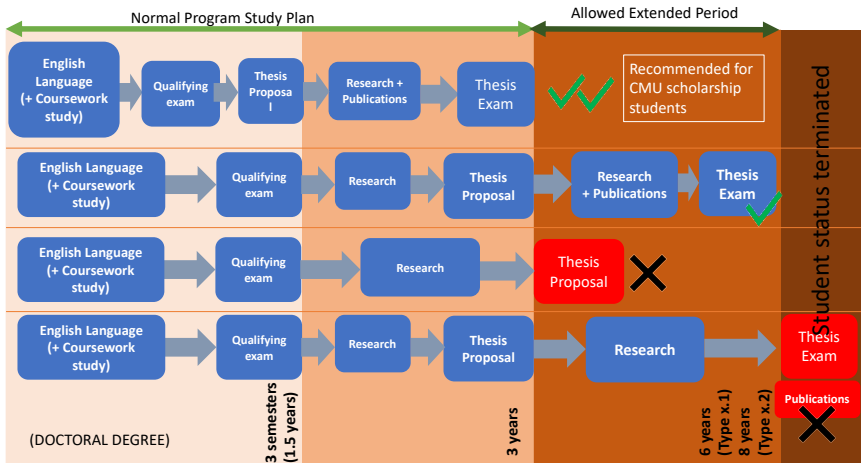
Regular seminars and meetings are organized by the programs and the faculty. Some students are required to attend them as part of their curriculum.

Scholarship students and students of some programs will be required to submit regular progress report to the graduate school (via the faculty), either every month or every semester.

General Study Plan (Ph.D.)

General rules of thumb are.

1. A student must pass English language and Qualifying Exam before Thesis proposal.
2. Thesis proposal must be approved within 3 years, otherwise the student status will be terminated.
3. Normal study plan is 3 years (Type X.1) and 5 years (Type X.2). [A student may complete their study within 6 years (Type X.1) and 8 years (Type X.2)]



Currently most graduate programs in Faculty of Engineering are for full-time study. Students have limited time to complete their degrees.

It may be possible to extend your study period under exceptional circumstances. Please contact your own department of your condition.

Scholarship students (TA-RA) for Ph.D. must complete thesis proposal in the 3 semesters (1.5 years) to continue scholarship eligibility.

All scholarships are only granted for maximum 6 years (type X.1) and 8 years (type X.2).

The faculty works closely with the department to ensure that all students receive gratifying academic and social experiences during their time with us.

Regular seminars and meetings are organized by the programs and the faculty. Some students are required to attend them as part of their curriculum.

Scholarship students and students of some programs will be required to submit regular progress report to the graduate school (via the faculty), either every month or every semester.

Course Enrollment

Course enrollment in regular semester must not exceed 15 credits.

Course enrollment in summer semester must not exceed 6 credits.

(To exceed the above number of credits, a student must apply for approval).

In the case that all the required credits have been earned, **a student must enroll for University Service**, in every semester until degree completion.

Enrollment & Fee payment must be completed within the dedicated period as specified in the academic calendar. (You must check always check the updated calendar).

Late enrollment and late fee payment will result in student status termination. !!

If you have difficulty with enrollment or fee payment (including scholarship students who are still waiting for the fund), you must contact the faculty **BEFORE** the deadline.

Website: <https://www.reg.cmu.ac.th>

Students in **Thesis only programs** (such as M.Eng. type 1, Ph.D. type 1.x) who already paid the fee for the first semester.

→ Must also enroll for university services (schedule below)

Important dates

Semester 1/2022

All students must do course enrollment or university service enrollment (0 credits) every semester.

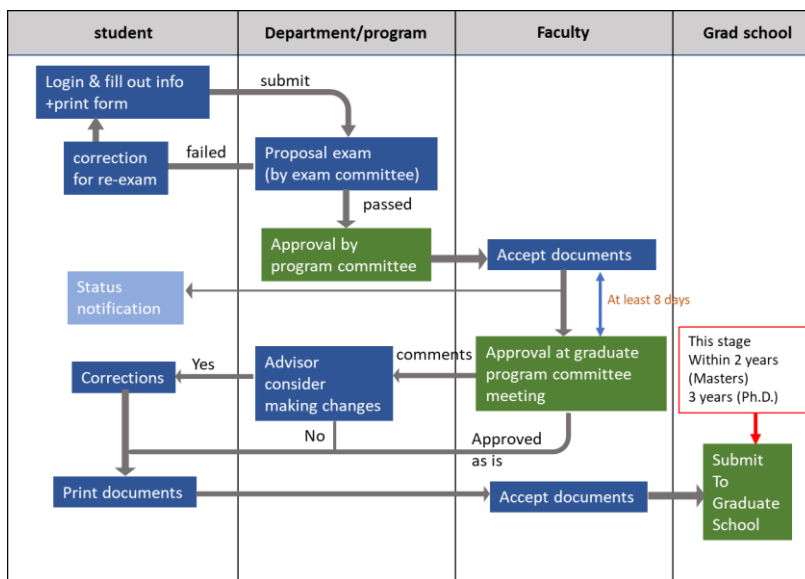
(For semester 2/2022, please check the dates in academic calendar links, p.1)

Course adding/dropping, course enrollment	June 18 – 26, 2022
University services enrollment	June 20 – July 29, 2022
Course withdrawal without receiving grade "W"	June 18 - July 1, 2022
Course withdrawal receiving grade W	July 4 -September 23, 2022
Enrollment fee payment	July 4 -9, 2022
First day of semester/classes	June 20, 2022
Midterm Exam period	August 29 -Sept 4, 2022
Final Exam period	October 24 -November 6, 2022

CREDITS are earned when a student receives A,B+,B,C+,C or S grades.

The grades for all Required Courses in your program must be ≥C, otherwise such courses must be retaken.

Thesis Proposal Procedure



A student must have passed English language condition before submitting their research proposal.

The meeting schedule for the Graduate Program Committee of Faculty of Engineering is on the first Wednesday of each month.

Login to submit proposal at https://reg.eng.cmu.ac.th/thesis_is/
(Additional information https://www.grad.cmu.ac.th/grad_wp2/?page_id=1403)

English language

Provisional Ph.D. student has 1 year to pass English language test (CMU-eTEGS ≥ 45)

English test scores required for thesis proposal

Master's (CMU eTEGS ≥ 60)

Ph.D. & Master's (Inter program) (CMU eTEGS ≥ 65)

Students can use results of other standard tests such as TOEFL, IELTS, TOEIC (only some Master's programs), etc. Details found in the new Language condition (link on page 1)

Test result is valid for 2 years. Please submit your test results to <https://reg.eng.cmu.ac.th/support> and also to your department.

Research publication

Research publication is required for all graduate students as per the degree conditions. The number and types of publications for each program type are summarized below. More details given in this announcement, [Criteria and Operating Procedure for Thesis Publication](#) . However, your own program may state them differently, students must recheck with their own program curriculum.

Table of minimum publication requirements (2022 updates)

Degree and Type	Inter Journal (in Database)	Inter Journal	TCI Tier 1 Journal	Inter Conference With proceedings	National Conference	CMU Grad School Journal or other method (accepted by the program)	Total
M.Eng. & M.Sc. Type 1			1*, †	1*	1		2
M.Eng. & M.Sc. Type 2			1*	1*			1
M.Eng. & M.Sc. Type 3						1	1
Ph.D. Type 1.1	1	1		1			3
Ph.D. Type 1.2	2			1			3
Ph.D. Type 2.1	1			1			2
Ph.D. Type 2.2	1**	1		1			3 (or 2)

Notes: 1) * either one is accepted
 2) ** if the journal paper is in ISI Q1/Q2, then only 1 journal paper is sufficient.
 3) International Journal Databases include ISI, IEEE, Scopus, PubMed, Web of

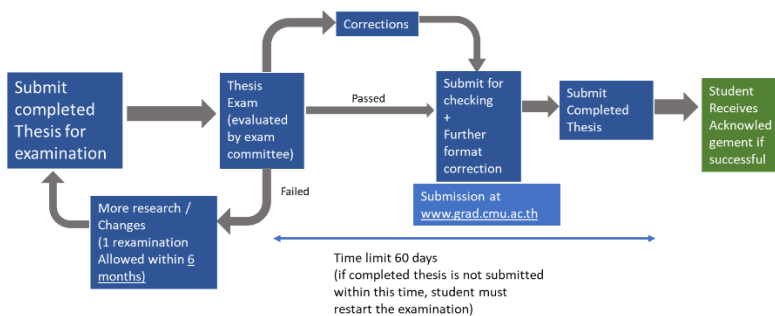
Science

4) At least one (main) publication must specify the student as the first author and the student's affiliation as “สาขาวิชา/ภาควิชา.....คณะ/วิทยาลัย/สถาบัน.....มหาวิทยาลัยเชียงใหม่” or “Program/Department of Faculty/College/School of, Chiang Mai University”.

5) Publication must not be in the list of Predatory Publishers.

6) † International journal can be used in stead of TCI Tier1 Journal

Thesis Exam Procedure



Thesis submitted for examination must be accompanied by a Turnitin plagiarism check report.

Graduation

- A student may apply for graduation if they fulfill all program requirements
- General requirements include
 - Overall GPA ≥ 3.00 (and Field specialized courses GPA ≥ 3.00)
 - Comprehensive examination passed (Master's type 3 and if specified by the program)
 - Thesis examination passed
 - Research publications

Determination and perseverance are key to your success.

Thesis advisor is there to help and guide you in your research. It is important to build and maintain good relationship with the advisor.

A student should make academic plan and discuss their research work with the advisor regularly.

Maintaining your student status

Graduate student status remains valid except in one of the following cases

- Student fails to complete course enrollment or university service enrollment within the allowed period at the start of each semester (1 and 2). Summer semester (3) does not count.
- Accumulated GPA < 2.75, from 2nd semester onwards.
- Student has not earned any credits after 2nd semester. (Except in a Thesis only program)
- Student's thesis proposal has not been approved after 2 years (Master's) or 3 years (Ph.D.)
- Student has failed qualifying exam (Ph.D.), even after re-exam
- Student has failed comprehensive exam (Master's type 3), even after re-exam.
- Reach the end of study period and is unable to extend their study. (5 years for Master's, 6 or 8 years for Ph.D.)

Contact

EDUCATION SERVICE (FACULTY OF ENGINEERING)

งานบริการการศึกษาคณะวิศวกรรมศาสตร์

Tel: 053 944179

Website: <https://reg.eng.cmu.ac.th/reg/>

Facebook :งานบริการการศึกษา คณะวิศวกรรมศาสตร์

[มหาวิทยาลัยเชียงใหม่](#)

DEPUTY DEAN FOR ACADEMIC AFFAIRS

Email: uttapol.s@cmu.ac.th

ASSISTANT DEAN FOR GRADUATE PROGRAMS

Email: ukrit.m@cmu.ac.th

GROUP CONTACT FOR SCHOLARSHIP STUDENTS (2022)

TA/RA scholarship students and
CMU Presidential Scholarship
students

Line open chat



Please set your name to
Student code

GROUP CONTACT FOR

All new graduate students in
2022

Line open chat



Please set your name to
Student code



งานบริการการศึกษา คณะวิศวกรรมศาสตร์ มหาวิทยาลัยเชียงใหม่

Office of Education Services, Faculty of Engineering, Chiang Mai University

239 Huaykaew Road, Suthep, Muang, Chiang Mai, 50200

Phone 053 944179

Web site address: <https://reg.eng.cmu.ac.th/reg/>